

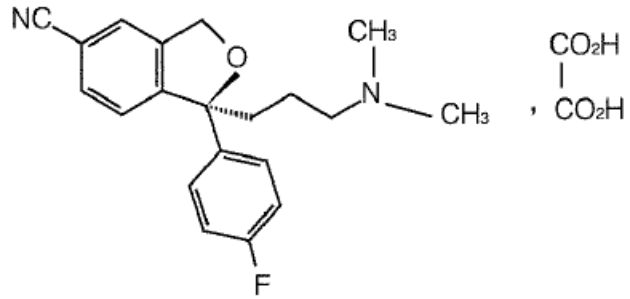
2006	10	27
2007	04	06
2010	01	21
2010	07	29
2010	12	10
2011	07	18
2013	02	28
2013	05	15
2015	03	27
2015	09	14
2015	12	24

®

Escitalopram Oxalate Tablets

Caosuan Aisixitaiipulan Pian

S(+)-1-(3-)-1-(4-)-1,3- -5-



C₂₀H₂₁FN₂O·C₂H₂O₄

414.43

400

5mg

10mg

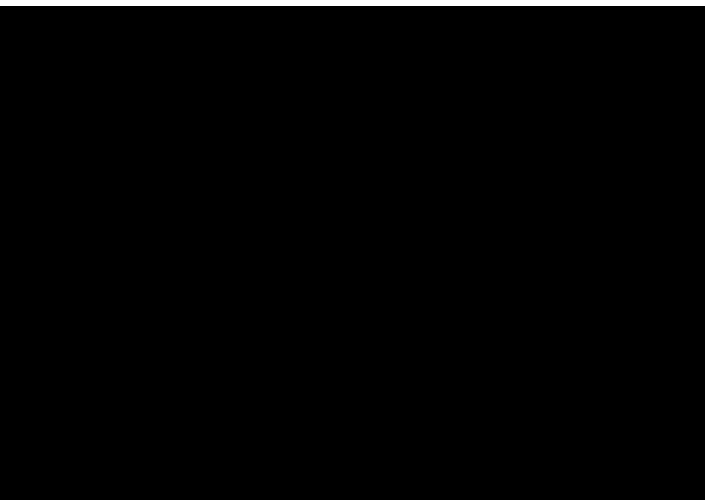
5mg 10 mg

1 10mg
20mg 2 4 6

1 5mg 10mg
20mg

3
>65
5mg 10mg

	<18					
		18				
					CL _{CR} <30ml/	
		5mg	2			
10mg						
	P450 2C19 CYP2C19					
	CYP2C19			5mg	2	
			10mg			
				1	2	
	20mg					
			2			
			SSRI			
	1/10	1/100	<1/10	1/1,000	<1/100	1/10,000
	<1/1,000	<1/10,000				



QT

QT-

QT

QT

SSRI

SSRI/5

-

SNRI

/

1.

2.

MAOI

3.

4.

5.

QT

QT

1.

2. QT

QT

QT

QT

ECG

ECG

ECG

3.

MAOIs

MAOIs

MAOIs

SSRIs

SSRIs

MAOIs

MAOIs

MAOIs 14

14

MAOIs

4. 5-

NMS

SNRIs

SSRIs

5-

5-

MAOIs

5-

NMS

5-

/

5-

5-

MAOIs

5-

5-

5-

1.

SNRIs SSRIs

2.

SSRIs

/

SSRIs

3.

SSRI

SIADH

4.

/

SSRIs/SNRIs

5.

6.

7.

SSRI

/

8. ECT

SSRIs ECT

9.

10.

11.

12.

/

SSRI/SNRI

5-

SSRI

<24

SSRI

PPHN

1000

SSRI

5

1000

1

2

PPHN

[B (MAO-B)]

5-

5- _____

5-

5-

SSRI

SSRI

SSRI

SSRI

SSRI

CYP2D6

CYP2D6

CYP2C19

70%

CYP2C19

CYP3A4

50%

CYP2C19

CYP2D6

CYP2D6

CYP2D6

CYP2D6

CYP2C19

CYP2C19

600mg

400 800mg

5-

QT-

/

4

8

3

10mg

20mg

8

20mg

40mg

20mg

10mg

24

10mg

20mg

		10	20mg/	8				274
					36		36	
_____		10					5	20mg/
		10	40mg/					
							(≥5%)
_____		3	12	1	6			
			24			5mg	10mg	20mg
	20mg/						20mg/	
5mg/	10mg/			2				
	(P≤0.05)							
		670			341			
58.1%	40.2%	CGI-I	1	2	24.8%	12.9%	(CGI-S	1 2) (P≤0.001)

		4				10mg	20mg/	
5mg/								
		3		8			421	
		419			47.5%	28.9%	CGI-I	1 2
		37.1%	20.8%	(CGI-S	1 2) (P≤0.001)			
		4	12				10mg/	
				20mg/				5mg
10mg	20mg/						(P≤0.01)	
		12		373		24	76	
	20mg/							

S-
 5-HT
 5-SSRI
 R- 100
 5-HT
 5
 5-HT₁₋₇ α β D₁₋₅ H₁₋₃ M₁₋₅
 Na⁺ K⁺ Cl⁻ Ca²⁺

 Ames 5 2 TA98
 TA1537 CHL HPRT
 DNA UDS

 , 32 48 72mg/kg/
 32mg/kg/ 48mg/kg/
 56 112 150mg/kg/
 [mg/m² (MRHD)20mg/ 56]
 56mg/kg/ MRHD 28
 6 12 24 48mg/kg/
 MRHD 24
 24mg/kg/
 12mg/kg/ MRHD 6
 /
 /
 32 56 112mg/kg/ /

2 60%

CL_{CR}

10 53ml/

CYP2C19

CYP2D6

30

5mg 14 / 28 /

10mg 7 / 28 /

36

JX20090196

5mg H20150161

10mg H20150163

5mg J20150120

10mg J20150119

H. Lundbeck A/S

Ottiliavej 9 DK-2500 Valby Denmark

34

710043

400 888 9988

029 82576616

<http://www.xian-janssen.com.cn>